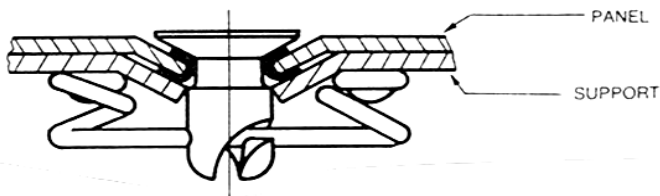




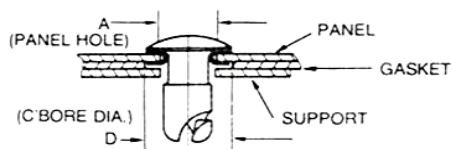
ZLoc® Aircraft Panel Installation



Panel Preparation - Oval Head Studs

Note: Actual Tools may not look identical to diagrams. Refer to Tool Number

Drill Panel Hole according to the following chart:



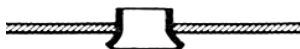
Stud Size	Hole Dia(A)	Dim(D)
3	7/32	11/32
4	5/16	15/32
5	3/8	19/32

Stud - Grommet Installation - Oval Head Studs

Note: Actual Tools may not look identical to diagrams. Refer to Tool Number

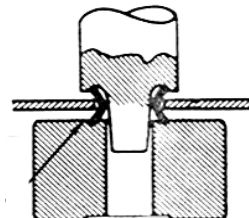
(1) Insert Grommet from Underside of Panel as shown

Note: Grommet installed upside-down



Note

Tool #1
Ex: A51



(2) Set Grommet just enough to retain in hole

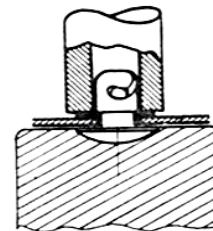
Tool #2
Ex: A52

(3) Insert Stud



(4) Clinch Grommet with Stud as shown

Tool #3



Tool #4

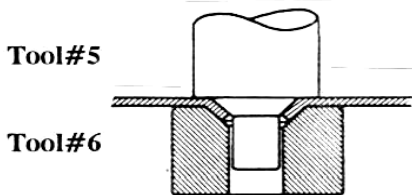




Panel Preparation - Flat Head Studs

Note: Actual Tools may not look identical to diagrams. Refer to Tool Number

Drill and Dimple Panel Hole according to the following chart:



Tools #5 and #6 not included in Kits

Stud Size	Drilled Hole
4	17/64
5	5/16

Stud - Grommet Installation - Flat Head Studs

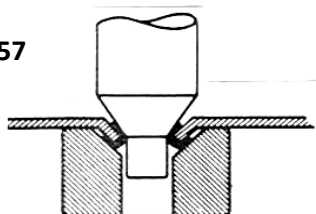
Note: Actual Tools may not look identical to diagrams. Refer to Tool Number

(1) Insert Grommet from Underside of Panel as shown



(2) Set Grommet as shown

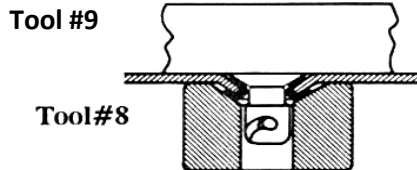
Tool #7 Ex: F657



Note: Grommet installed up-side-down

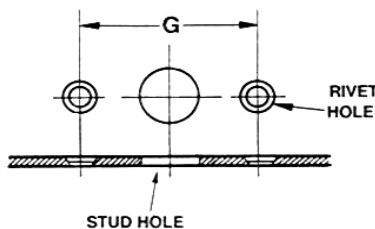
Tool #8 Ex: F658

(3) Insert and Clinch Stud with Grommet



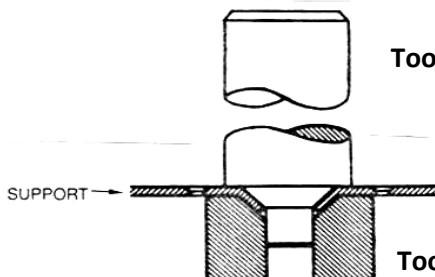
Support Panel Preparation for S-Spring Receptacle

(1) Drill Holes according to Chart:



Spring Size	Center Hole Oval	Center Hole Flush	G Dim	Rivet Hole	Rivet
3	11/32	3/16	.625	#40	3/32
4	15/32	1/4	.750	#40	3/32
5	19/32	5/16	1.000	#30	1/8
6	21/32	3/8	1.375	#30	1/8

(2) Flush Head Studs Only - Dimple Support Panel as shown:



Tool #10

Tool #11 - Note: Tools 10 and 11 not included in Kits