

November 1, 2016

Cessna 150 NEW Skybolt SK2003-42A Gen IV Platemount Conversion Kit

CLoc® SK40S5S and SK26S8S Series Fasteners



Please Read these instructions before you remove the cowling. There is an important step prior to removing the cowling that will save you a lot of time and aggravation.

The Skybolt developed Conversion Kits primary purpose is to remove a light duty fastener system and install a proven heavy duty fastener system. Our kits and the installation process go further than just replacing fasteners; we are correcting issues with most cowlings to improve the design and lower maintenance costs.

We recommend viewing our test flight video to better understand what is going on under the hood with the shock mounts. www.youtube.com/embed/de9hrCiv5iA Go to Skybolt.com under “Videos”.



When Cessna developed the cowling mount system for the C150, C172, C177, and some C182 airframes, they apparently took into consideration that the mounts could fail and the cowling could come in contact with the prop spinner. On some models, they installed a snubber (the same J7444 mount used around the firewall) at the nose of the

lower cowling. What was designed to prevent a problem in some cases is the problem. The front of the engine tends to rest on this snubber mount. As the engine has considerable movement from startup to flight and back to the shutdown, engines can and do place forces on the cowling, particularly the C172, particularly but not limited to the C172 with O360 engines.

It is not uncommon for fleet operators to install the SK203 Kits on multiple airframes and have one airframe destroy the rubber firewall mounts on a routine basis. In conjunction with the Embry Riddle maintenance department, we developed certain theories to support this. The theory that stands out is engine inclination. A smart level can

determine this angle quite easily. On a C172, the upper door frame is a leveling datum on the same degree as the leveling screws on the fuselage. Compare this angle with that of the engine case as shown. If this angle is more than 5 degrees; if the engine mounts are worn out or not installed properly, the airplane is going to destroy the rubber cowlings unless the mounts have a large degree of flex such as the J7444-42 or the Skybolt SK2003-42A. The SK2003-42A is engineered for the worse case that we have encountered and we test 100% of our mounts in the shear flex motion. The flight test we conducted was on a well maintained C172S model with a 2 degree down engine sag. The test demonstrated how much shear movement the cowling mounts are subjected to. Imagine if this were a 5 degree sag or a 5 degree sag with a firm landing. What we also discovered was the amount of downward moment the engine has on the nose snubber during takeoff and climb.



By installing this conversion kit, we want to address and fix these problems.

Note: As this was written primarily for the C172, the C150 does not tend to experience this level of challenges, but the information may be helpful.

Forward – Skybolt allows 9-1/2 to 10 Hours labor for this Installation...we have the right tools and experience. Some aircraft of the same model are easy conversions (6-7 hours); some are not (10 hours). Allow time for required paperwork (Form 337 submitted with STC and proper logbook entry).

Procedurally, do not remove your cowling, and then start reading instructions as all of the following steps are out of sequence and the project will take longer than required. Our experience suggests the following sequence:

- 1) Use the SK203-TEM1 alignment procedure to establish a baseline to refer back to with the cowling removed.
- 2) Remove only the Top Cowling and follow the Steps 1 thru 5. This establishes early on some options to consider when the Lower Cowling is removed and SK2003-42 Platemarks are installed. Not following this sequence could require removing platemarks in order to modify (SK2003-AW4 CamWashers) to fix alignment problems. This sequence also is designed to minimize how many times you must position the Lower Cowling (difficult and time consuming) attempting to align fastener holes, paint stripes, or nose to spinner alignment. Working with the Upper Cowling first gives an established baseline to work from.

The Cessna 150 Cowling is unique in 2 ways compared to other cowlings – (1) the cowling tends to fit tight along the horizontal split. Typically, with new platemarks, it is difficult to bring the upper and lower cowling split together into alignment. Eliminating shims helps this problem or using the SK2003-AW4 CamWashers on the lower mounts help shift the lower cowling up into alignment with the upper cowling split. The SK2003-AW4 CamWashers are a great help to bring paint stripes and paint lines back into alignment (2) the lower cowling has a 90° doubler that runs along the upper horizontal edge. This doubler will only allow the smaller CLoc® 2000 Series

fasteners to be used along the sides. Optional Skybolt Kits SK203C150P4D (Complete Conversion Kit) or SK203C150LC (Side Only SK40S5S Conversion) replace this doubler to allow the installation of the larger CLoc® SK40S5S Series Fastener and to allow some shifting of the side holes for a much improved fit.

Before you begin the project, become familiar with the following recommendations or warnings –

- 1) Before you remove the cowling – Read section on SK203-TEM1 Alignment Template, Page 4
- 2) There are 4 fasteners along the upper cowling sides (the horizontal split). Unless you are installing the optional Kit that replaces the lower cowling doubler, the holes associated with these 4 fasteners (4 on each side) are not to be drilled for the larger SK40S5S CLoc® fastener. It is particularly easy to mistakenly drill the rear hole on either side thinking that it is associated with a firewall Platemount. Mark this rear hole or place a piece of tape over each rear hole on the upper cowl horizontal split.
- 3) Please note page 12 for operation of SK213 and SK245 Adjusting Receptacles.
- 4) Camloc or CLoc® Studs - Forcing or over-torquing studs will allow the stud pin to loosen and fail. Forcing means that the stud is too short for the application or the insert is incorrectly adjusted. No returns accepted on over torqued studs (Studs with loose or missing pins). This is plainly indicated by galled heads on the stud as a result of attempting to force the stud to lock.

Cessna issued Service Bulletin SB98-53-02 for newer 172 R & S airplanes on December 31, 1998 to address the root of the problem with shock-mounted cowlings. (Applies to all shock-mounted cowlings). This 29 page service bulletin describes an exhaustive procedure to align cowl mounts and assumes approximately 18 hours to accomplish. Skybolt has developed an alternate procedure that is simple and consumes very little time to properly align mounts with the corresponding fastener hole in the cowling. Step 1 in this manual will describe how to check for mount alignment. The fix to alignment problems is explained throughout these instructions.

INSTALLATION – SK203C150P4 - Standard Conversion (See Page 10 for SK203C150P4D Complete Conversion)

Converting Firewall Fasteners to CLoc® SK40S5 Series Fasteners – Side Fasteners to CLoc® SK2800 Series Fasteners

SKYBOLT SK2003-42A Mounts and SK213 Receptacles

PLEASE NOTE: The most important points you must adhere to in converting your aircraft are:

- (1) Reading these instructions will save installation time and costly mistakes.
- (2) Never drill any holes referenced with a standard drill bit. You must use a step drill or risk damage to the airframe or cowling.
- (3) The biggest problem we encounter is a lack of understanding on how a CLoc® stud works. These are not Dzus® studs where the bigger the screwdriver the better. CLoc® studs require very little torque to lock. Over torquing simply ruins the stud by loosening the pin. Readjust inserts to allow stud to lock with minimum effort.

There are three segments of the cowling we refer to in these instructions:

- (A) The firewall support brackets
- (B) The lower cowling containing the firewall studs and the side receptacle mounts.
- (C) The upper cowling containing both firewall and side studs.

ADVANTAGES TO CLoc® SERIES SK40S5 and SK2600 Series studs:

- (1) Much stronger and easier to lock than the Lord-Southco design.
- (2) Side cowling receptacles mount in the same rivet holes as Southco receptacles they replace.

Tools Required: 3/8 Drill Motor (Extra Drill Motors preferred)
Small Open End wrench (11/32)
UNIBIT-1 and Unibit-3 or -4 Step drill
Rivet Gun or Rivet Squeezer
Curved Pick Tool (To readjust SK213 receptacles if used)
SK-4P3 Pliers
SK-T26 Retainer Tool
Optional Drill Jig – 1-1/4” Hole Saw and 3/4” Hole Saw

Before you begin –

Take a close look at your cowling before removal.

Note its positioning relative to the prop spinner. If the cowling appears to not align with the spinner bulkhead or is not centered, repositioning of shims and mounts can correct this problem.

Also note clearances between the aft cowling skin and the fuselage skin. The allowable gap is 0.03 inch to 0.25 inch, with 0.12 inch preferred, except within 5.0 inches above and below the static port where the allowable gap is 0.06 inch to 0.13 inch. With this installation, it is simple to correct a side fastener alignment problem by a shim adjustment when you install the new SK2003 mounts, and positioning adjustment (alignment) of the mount to correspond with fastener hole in the cowling and or centering of the nose of the cowl.

Note paint stripes and paint lines.

Note any difficulty of fasteners aligning with respective holes.

To do this conversion correctly, we will address all of these issues.

Many cowlings are difficult to install because of unaligned side holes and fasteners, especially the rear most fasteners along the sides. A shim adjustment (firewall platemounts) can cure this problem easily. If your cowling has no problems with skin clearance or side fasteners, thus shim adjustments are not necessary, the next step is to note any adjustments required to center the nose of the cowling relative to the spinner. If shim adjustments are required, mount alignment will become more of a two-step process involving both the upper and lower cowling. By moving the mounts forward or rearward, the nose cowling can be adjusted. The second step will be to adjust

firewall mounts in order to center the fastener hole with the corresponding mount. With the SK2003-AW4 washers, this adjustment is very easy.

Step 1 – (1/2 Hour) Note: SK-Template

Place 10” strips of 1” masking tape behind the rivet line on the boot cowl adjacent to each stud as noted in picture. Sight template over each stud and mark holes onto tape. This important step will greatly enhance the alignment of each SK2003 mount at each location.



Close-up of template placed over stud and holes marked for alignment after cowling removed

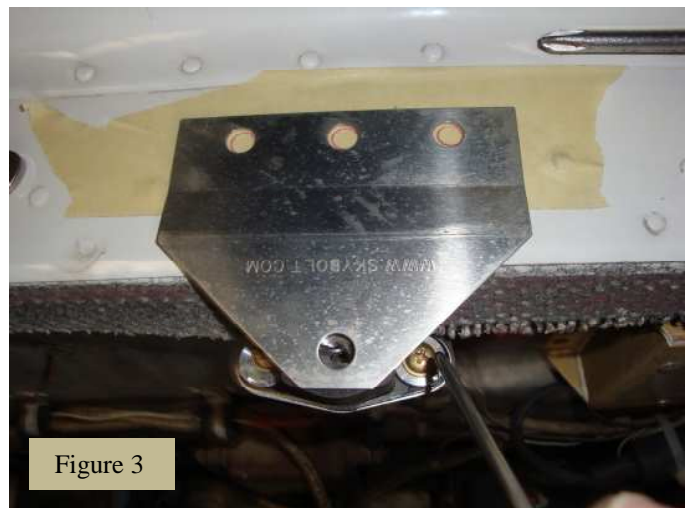
Now, when you remove the cowling, it is easy to determine the mount position relative to the cowling hole for each location. If the template determines that a mount is over 1/4” from the center, the use of SK2003-AW4 Cam Washers are an easy fix to re-locate the new mounts.



This is all too common on many Cessna cowling mounts. Without the SK203-TEM1, it would be difficult to tell just how much each mount is off from its respective cowling hole. To move a mount far enough to center (as in this case), this mount will need to be modified for SK2003-AW4 Camwashers.

With camwashers installed, simply dial the washer to move the mount until centered with the template. It is that simple!

We will discuss the camwashers later on page 8.



Step 2 - Remove Upper Cowling. Leave Lower Cowling on Aircraft. If you are *not* installing the optional SK203C150P4D (Complete Conversion Kit), place a piece of tape over the rear side hole of the Upper Cowling to prevent drilling in Step 5.

Step 3 – (1/2 Hour) Remove Upper Firewall Platemarks

Note the number of shims at each location and mark this on the firewall bracket. Plan to add or subtract shims to achieve clearances stated in Step 1. Now, remove all old mounts.

Step 4 – (1/2 Hours) SK2003-42 Installation

Install new SK2003-42 Mounts at all upper firewall locations with hardware supplied in kit. With the SK203-TEM1 template, check that each mount is centered as described above. If mounts are not centered within 1/4 of an inch, the SK2003-AW4 Camwashers must be considered.

Step 5 - (1/4 Hour) Firewall Holes Only (Do not drill rear hole along cowling Side) - With Unibit-1, drill firewall mount fastener holes to 15/32 (the next to last step on the Unibit-1 drill).

Step 6 – (1/4 Hour) Install Grommets

Install the grommets and retainers with the SK-T26 tool. Push the R4G retainer onto the tapered shank close to the end, and then use the hand tool to insert the ring onto the grommet. Check that the retainer is properly seated.

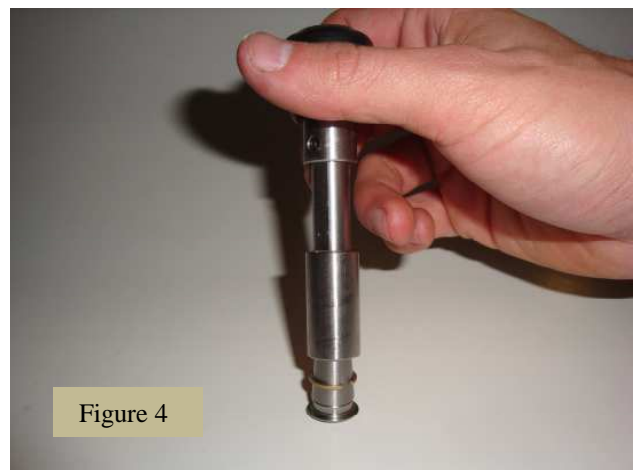


Figure 4

Step 7 – Install CLoc® Studs in all firewall holes in Upper Cowling with SK-4P3 Pliers.

Step 8 – Position Upper Cowling. Lock firewall studs and note any changes to the alignment of the side fasteners. (With new mounts, most likely you will see alignment issues). This step will determine the decision to use SK2003-AW4 CamWashers for the Lower Cowling Mounts. You now have a good baseline to work with the Lower Cowling. Remove Upper Cowling.

Do not remove Lower Cowling. The following step is easier with the Lower Cowling installed.

Step 9 – (1/2 Hour) Remove Southco Receptacles from Lower Cowling Sides

Drill out (remove) receptacles with #40 drill. Drill center holes to 7/16 with Unibit-1. On C150 aircraft, it is easier to *install* receptacles and squeeze rivets once the lower cowling is removed.

.....*For SK203C150P4D KitsSkip to Step 23*

Step 10 – (1 Hour) With Lower Cowling Removed. Install SK213-2 receptacles with rivets provided along sides. Orient SK213-2 receptacles with the unlocking clip (anti-lock pin/locking tang) facing up. This makes any future adjustment with a curved pick tool easier.

Step 11 - (1/4 Hour) Remove Southco studs from firewall holes. Drill Lower Cowl Firewall Holes - With Unibit-1, drill firewall mount fastener holes to 15/32 (the next to last step on the Unibit-1 drill).

Step 12 – (1/4 Hour) Install Grommets

Install the grommets and retainers with the SK-T26 tool. Push the R4G retainer onto the tapered shank close to the end, then use the hand tool to insert the ring onto the grommet. Check that the retainer is properly seated.

Step 13 – (1/2 Hour) Remove Lower Firewall Platemarks

Note the number of shims at each location and mark this on the firewall bracket. Plan to add or subtract shims to achieve clearances stated in Step 1. Now, remove all old mounts.

Step 14 – (1 to 2 Hours) SK2003-42A Installation

Install new SK2003-42 Mounts at all Lower Cowl Firewall locations with hardware supplied in kit. With the SK203-TEM1 template, check that each mount is centered as described above. If mounts are not centered within 1/4 of an inch, the SK2003-AW4 Camwashers must be considered.

Step 15 – Install CLoc® Studs in top firewall holes in Lower Cowling with SK-4P3 Pliers. (Leave the other studs out for the initial phase).

Step 16 – (1/2 Hour) Position Lower Cowling and fasten two upper fasteners to hold cowling in place. Be certain that rear cowling firewall doubler is properly positioned on mounts.

Note 3 things: (1) Do the cowling paint stripes line up. (2) is the cowling in line with the spinner. (3) Look through each grommet hole to determine if mounts are aligned with holes. Placing the Upper Cowling into position will also determine how close the horizontal split is to a proper fit. It is more of the norm that 2-3 mounts do not align with the grommet holes; that the paint stripe is not aligned; and the horizontal split is ¼ inch or more from an ideal fit. You can force anything up to a point, but the beauty of this installation is that we can fix all of these problems with shims and/or the SK2003-AW4 CamWashers.

Note: If by chance your cowling holes all align; the paint stripes align; and the horizontal split holes all align, skip to step 19. This is a rare occurrence.

If the lower cowling must be shifted up (typically), consider removing shims at the bottom. If shim elimination is not an option, plan on using SK2003-AW4 CamWashers at multiple locations on either side or both of the lower cowling. By “dialing” the CamWashers full up for multiple mounts, the cowling can be shifted up considerably without the cowling skin touching the aircraft skin. Approximately .030 clearance can be considered a minimum. You may find that only one side needs a shift.

-----If Required-----

Step 17 – (1 Hour) To modify SK2003-42 Mounts - If Required

Typically, three or four mounts may require movement greater than 1/4 of an inch. Modify as many SK2003 mounts as required by drilling mounting holes to 7/16 inch with a Unibit-1 bit. Deburr holes and check that the SK2003-AW4 washers insert properly. *Note: Drilled shims are no longer required.*



Figure 5

Drill mount holes to 7/16” with Unibit-1 drill



Figure 6

Modified SK2003 Platemount installed with SK2003-AW4 Camwashers

Simple Drill Jig -

Use a small 2x4 as a drill fixture. Trace a platemount onto the wood surface. Mark the center of the mount and the center for each mounting hole. Drill the center all the way through the board with a 1-1/4” hole saw. For the “ears”, only plan to drill the mounting holes 1/4” deep. Any deeper and a typical drill press with a Unibit-1 will use up its full stroke prior to the 7/16” step. Use a 3/4” hole saw for the ears. Carefully notch the wall between the large and small holes so that the mount fits nicely into the drill jig.

Place the mount into the drill jig and drill each mounting holes. To prevent a huge burr on the back side, only start the 7/16” step less than 1/2 way through the metal and stop. Flip the mount and finish the 7/16” step from the back side.

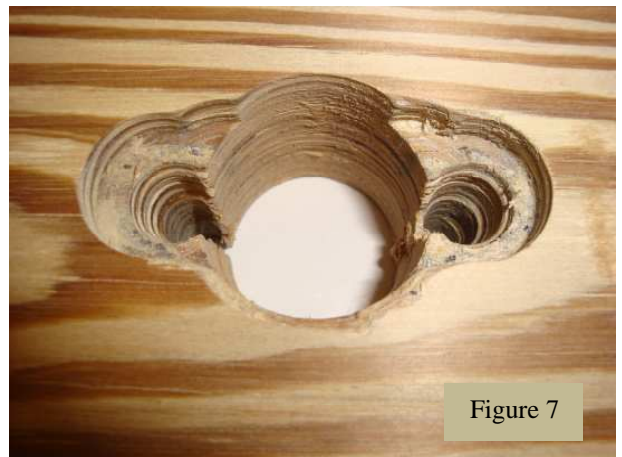


Figure 7

The SK2003-AW4 Cam Washers are slotted so as the mounts can be mounted in a centered position. By moving the mount within the slot, alignment of the platemount may be possible. For additional movement, simply rotate the washers to a desired center or shift. Once the desired center or shift is located, tighten screws and you are done. Unlike the Cessna Service Bulletin SB98-53-02, this modification is easy, accurate, and involves no drilling of the airframe brackets or relocation of brackets.

Note – Camwashers “dialed” full up to shift this Lower Cowl up to the paint line and to align side fasteners. The 3 lower mounts on the right side have all been modified for the SK2003-AW4 Camwashers; full up bias. The left side of this cowl did not need this shift for alignment.



Figure 8

Step 18 – (1 Hour) Re-install modified SK2003-42 Mounts. “Dial” the Camwashers to the desired offset to achieve alignment goals.

Step 19 – (½ Hour). (SK203C150P4 Kit Only) - Install SK213-2 Receptacles along sides.



Figure 9

Step 20 – (½ Hour) Position Lower Cowling as described in Step 16. Position the Upper Cowling. Install SK40S5S fasteners in all firewall holes and lock. (**Note: If studs appear to be tight or not lock, do not force to lock. A longer stud is required**).

With Lower Cowl fastened, and Upper Cowl in position, stripes are in line, side edge is properly positioned with paint line, and side holes are in line.

Now note 3 things: Are the same alignment items as described above resolved? Hopefully, considerable progress has been made. The horizontal split holes should be close to center, hopefully, at center. If alignment is still a problem, additional Camwashers may be the only answer.

.....*For SK203C150P4D KitsSkip to Step 25*

At this point, all firewall mounts are properly positioned and all 10 firewall studs are properly locked. All horizontal holes are aligned. If any alignment issue remains, the quality of this conversion assumes that these conditions are addressed and resolved. On some cowlings, this can be time consuming and outside of the estimate of time required to fix.

Step 21 – (¼ Hour) Install SK28S3 Studs into Upper Cowling horizontal side holes. Lock into receptacle and continue to turn until receptacle insert draws the stud into the proper locked position. After all fasteners are adjusted, use a quick “push-turn” motion to unlock the studs without disturbing the insert. Remove the upper cowling and pull the black anti-lock pins in all 8 side receptacles. Rotate each insert to the proper locked position. To re-adjust any receptacle, insert a curved pick tool into the back of the receptacle (at the same slot location that the black anti-lock pin occupied) to lift the locking clip and allow the insert to rotate. See Figures 16 and 17.

Step 22 – (1/4 Hour) Install SK2600-LWS retainers onto the studs installed in Upper Cowling. (Can be pressed on with Skybolt Tool SK-T26. If retainer bends, simply straighten and try again until it is pressed onto fastener cup and is tight against the inner cowling surface.

Final Step - Inspect engine compartment for tools. Reconnect landing light wires if applicable. Install cowling for final check.

SK203C150P4D (Complete Conversion Kit) –or- SK203C150LC (Side Only SK40S5S Conversion)

This Kit replaces the Lower Cowling side doublers with Skybolt Part# SK-C150DBL (left) and SK-C150DBR (right) doublers. These new doublers allow the installation of Skybolt CLoc® 4000 Series fasteners as used on the firewall. By installing new doublers, slight adjustments for “tight” cowlings can be easily achieved, depending on the existing paint lines on the Lower Cowl. Replacing these doublers is an easy task and greatly improves the cowling fastening system that mirrors the C152 cowling configuration. The following Steps supplement Steps described above in these instructions.

.....**Begin with Steps 1 thru 9 (You will be directed back to Step 23 after Step 9).....**

Step 23 - (1/2-Hour) Drill out rivets to remove old doublers along sides of Lower Cowling.

Step 24 – (1 Hour) Position Skybolt SK-C150DB (L or R) so that the 90° bend is in line with the edge of the nose bowl and parallel with the horizontal edge. Drill at least 2 rivet holes that will not interfere with the enclosed adapter plate receptacles. Cleko doublers. *Remove Cowling.* Place a couple of rivets into each strip, just enough to hold strip in place.



Figure 10



Figure 11



Figure 12



Figure 13

.....*Return to Step 11*.....

Step 25 – (1/4 Hour) Establishing desired center for all Side Receptacle Adapters. With both cowlings properly positioned and firewall fasteners properly locked, the desired positioning of each side receptacle can be easily established by marking or scribing each side hole through the existing side hole. Remove the Upper Cowling.

Step 26 – (1/4 Hour) With Lower Cowl on aircraft, drill center pilot holes as established by the scribe lines. With Unibit-3 or -4 Stepdrill, expand the pilot holes to 5/8". Remove Lower Cowling.

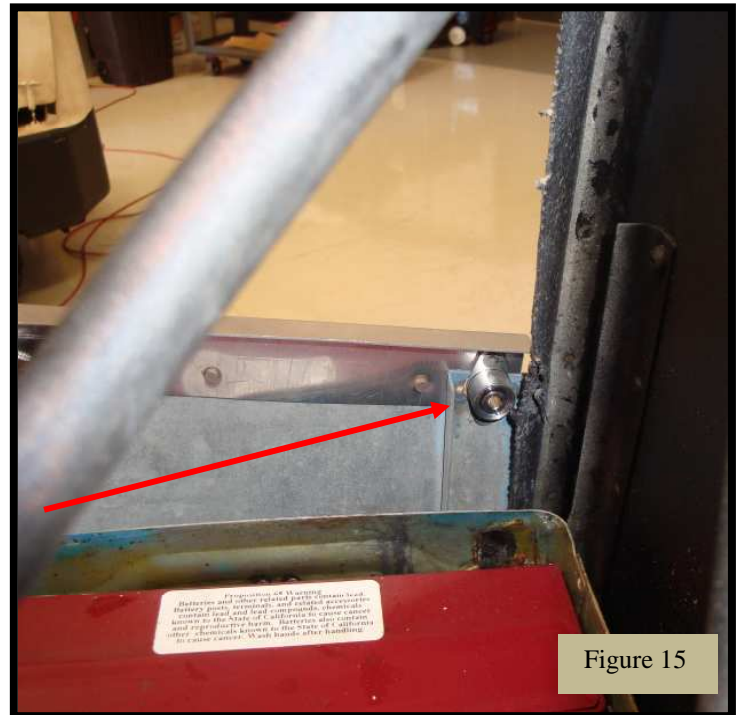
Step 27 - (1/4 Hour) Upper Cowling Side Holes (4 each Side) With Unibit-1, drill 8 side holes to 15/32.

Step 28 – (1/4 Hour) Upper Cowling - Install Grommets. Install SK-OS Grommets and R4G retainers in side holes. Use SK-T26 Tool to install R4G Retainers. Slide the retainer close to the end of the taper insert, then push retainer onto grommet using tool handle. Install SK40S5-2S Studs in all side holes with 4P3 Pliers.



Step 29 – (1 Hour) Install 8 SK245 Adjustable Receptacle Assemblies properly centered with holes drilled in Step 26. Note: The SK245 Receptacle anti-lock pin location. Orientate receptacle locking clip anti-lock pin towards the top (or front) for easy access. Once the pin is removed, to re-adjust the receptacle, a curved pick tool is inserted into the same groove (beneath the locking clip).

Note: The rear hole requires that the receptacle is mounted 90° (vertical) without the adapter plate. The adapter plate is used so that existing rivet holes in the cowling skin do not interfere with new receptacle rivet holes.



Step 28 – (1/2 Hour) Install Lower and Upper Cowl.

Lock all studs around firewall. Begin engaging studs along the sides and continue to turn until adjusted so that the stud head is flush with the grommet face. With a sharp push-turn motion, attempt to unlock studs without disturbing the receptacle insert. Remove Upper Cowl. Pull anti-lock pins.

With a flat blade screwdriver, turn inserts so that the slot is just past being aligned with the mounting rivets

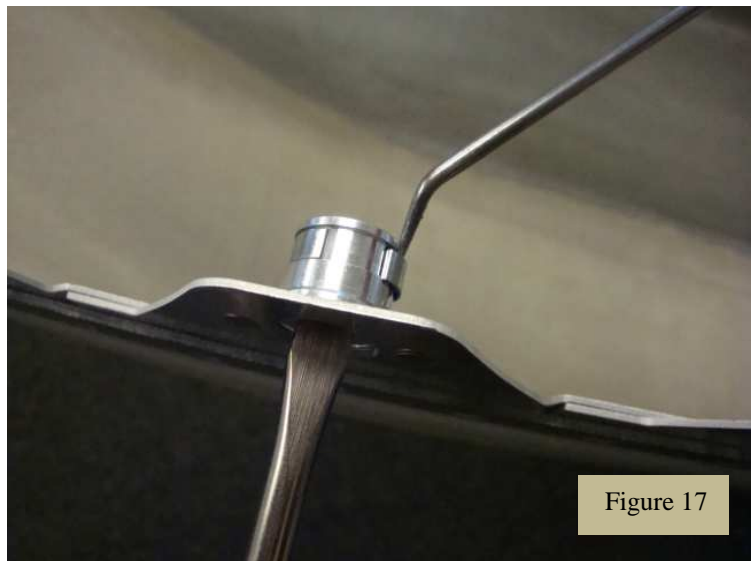


Final Step - Inspect engine compartment for tools. Reconnect landing light wires if applicable. Install cowling for final check.

Re-Adjusting the SK245 Adjustable Receptacle (after initial adjustment and pin removal)

The easiest method of re-adjustment is with a curved pick tool (part of any pick tool set). It allows access in tight spaces and is much easier to use than a straight pick tool.

Locate the locking clip tab (the reason we orientated the receptacle in Step 29). Insert the pick and lift the tab, unlocking the insert, adjust with flat blade screwdriver. One half turn adjusts the fastener .015; one full turn adjusts the fastener .030; the equivalent of a stud dash number.



Project Complete –

This is the way Cessna should have built the cowling. They finally did on the C152.

This cowling fits nicely around the firewall; the side hole line up perfectly; and the CLoc® 4000 Series Fasteners add a finished touch.



Figure 18

Platemount Configured Aircraft

Aircraft	Note	Year	Models	Serial Numbers	Screw Cowlings	Platemount Cowlings
C150	A	59-66	150A-F	17001-17999, 5901-64532	6,527	
C150	1	67 On	150G-M	64533 thru 79405		14,872
A150	1	70-77	150K-M	A150001 thru A150734		734
C172	A	56-66	172, A-G	28000-54892 plus Reims SN	27,279	
C172	1	67-81	172H-P	54893 thru 75034		21,186
C172	2	82-83	172P	75035 thru 76079		200
C172	2	83	172Q	75869 thru 76079		200
C172	3	84-86	172PII & Q	76080 thru 76673		593
C172	4	77-81	172XP,XPII	2000 thru 3454		1,454
C172	5	96-On	172 R&S			300
C175	A	58-62	175, Skylark	55001 thru 57119	2,119	
C177	1	71-78	177 A-B Classic	0001 thru 1366		2,752
C177RG	1	71-78	177RG,RGII	0001 thru 1366		1,366
C180	A	53-60	180, A-C	30002-33000, 50105-50911	3,804	
C182	A	56-60	182, Skylane	33000 thru 53007	4,105	
C182	5	73-86	182P-RB	61426 thru 68542		7,116
					43,834	50,773

Note	Configuration
A	Screw Cowling
(1)	Lord-Southco
(2)	Lord-Southco FW & Sides, Camloc 4002 Nose
(3)	Lord-Camloc 27S3 FW & Sides, Camloc 4002 Nose
(4)	Lord-Southco FW, Camloc 4002 Top Center, Nose & Sides
(5)	Lord-Camloc 27S3 FW, Camloc 4002 Sides

Weight & Balance Considerations for Conversion

Aircraft	Original Fasteners	Skybolt Fasteners
C150	.160g/.35lb	.385g/.85lb
C172	.210g/.46lb	.525g/1.15lb
C177	.215g/.48lb	.520g/1.15lb
C182	.170g/.37lb	.385g/.85lb

SKYBOLT



AEROSPACE FASTENERS

Proper Installation of this modification is important. Equally important is proper documentation.

Before returning your aircraft to service, you must accomplish 3 important steps:

- 1) Send Email to Skybolt to receive a copy of this STC, authorization to use the STC, and accepted language to file Form 337 with the FAA
- 2) Prepare and file Form 337 with the FAA. Note: as this is an STC'd installation, Form 337 is filed after the conversion is complete and no further acknowledgement from the FAA is required. But it must be filed for the aircraft to be returned to service.
- 3) Make a logbook entry that the kit was installed as per the Skybolt Instructions (Rev number/Date).

By contacting Skybolt (dbowers@skybolt.com or abraun@skybolt.com) this allows us to log and track the airframe that has been converted. If we have a revision to our kit or any issues with any component of the kit, we will have a method to contact the owner with important details.

Please provide the following:

- 1) **N Number of the aircraft**
- 2) **Model and Serial Number of Aircraft**
- 3) **Kit Serial Number**
- 4) Date of Purchase
- 5) From whom Purchased
- 6) Date of Installation
- 7) Approximate hours on engine and/or engine mounts