

# CLoc<sup>®</sup> Heavy Duty 4002 series

The CLoc<sup>®</sup> 4002 Series Fastener is the perfect Heavy Duty 1/4 Turn Fastener for applications requiring maximum strength and durability.

CLoc<sup>®</sup> 1/4 Turn Fastener range allows one stud length to fit most panel thickness.

Choose from 2 studs, 2 grommets, 2 retaining clips and 2 receptacles to suite your requirements.

Available in Stainless Steel & Skytanium<sup>®</sup>



## Studs

- Studs compatible with industry standard fasteners with common dash numbers -1 to -11.
- Super lightweight Skytanium<sup>®</sup> offers 900lbs (408Kgs.) ultimate load at around 50% the weight of steel.
- Stainless fasteners approved to FAA TSO-C148. Strength ratings exceed MIL-5591C.



SK4002-\*S Stainless Steel  
ZG4002-\* Skytanium<sup>®</sup>



SK40S5-\*S Stainless Steel

## Grommets



SK-OS Stainless Steel  
ZG-O Skytanium<sup>®</sup>  
PlusFlush Grommet



SK-N3S Stainless Steel  
ZG 094 LA Skytanium<sup>®</sup>  
Large Area Grommet

## Retaining Rings



SK-R4G  
Standard Snap Ring - 1mm (.04)



SK-R4T  
Heavy Duty Snap Ring - 1.44mm (.57)

- Unique adjustable receptacle allows a single stud length to cover a range of thickness.



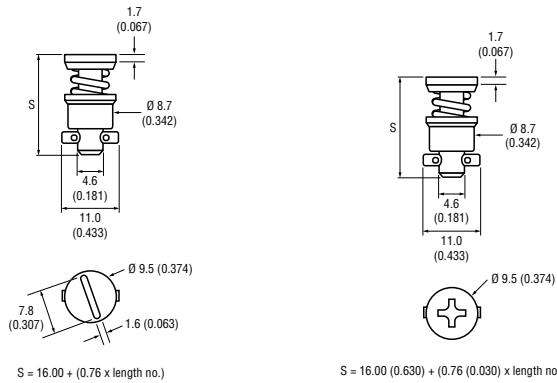
SK215-4 Rigid



SK245-4 Floating

# CLoc® Heavy Duty 4002 series (technical information)

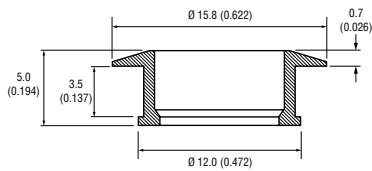
## Studs



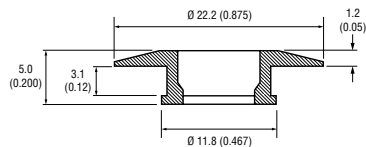
**SK4002 - \*S** Stainless Steel  
**ZG4002 - \*** Skytanium®

**SK40S5 - \*S** Stainless Steel

## Grommets



**SK-OS** Stainless Steel  
**ZG-O** Skytanium®  
PlusFlush Grommet



**SK-N3S** Stainless Steel  
**ZG 094 LA** Skytanium®  
Large Area Grommet

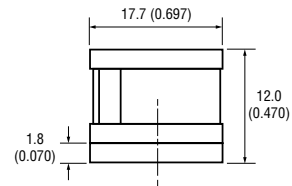
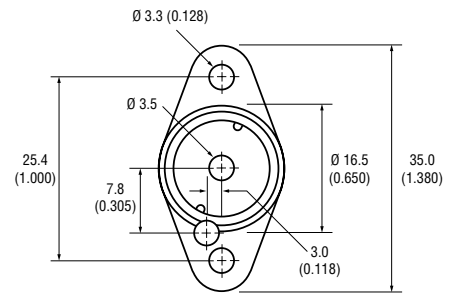
## Retaining Rings



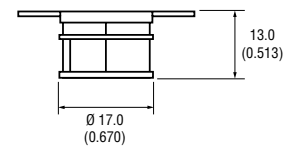
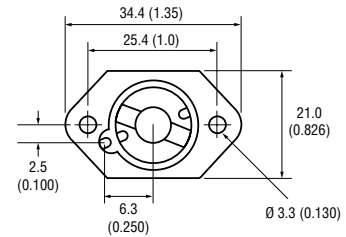
**SK-R4G**  
Standard Snap Ring - 1mm (.04)c

**SK-R4T**  
Heavy Duty Snap Ring - 1.44mm (.57)

## Adjustable Receptacle



**SK215-4** Rigid



**SK245-4** Floating

## Maximum Grip Ranges

Stud Dash*	Min Grip	Max Grip (1)
<b>-2</b>	<b>0.090 (2.28mm)</b>	<b>0.34 (8.63mm)</b>
<b>-3</b>	0.120 (3.04mm)	0.37 (9.39mm)
<b>-4</b>	0.150 (3.81mm)	0.40 (10.16mm)
<b>-5</b>	0.180 (4.57mm)	0.43 (10.92mm)
<b>-6</b>	0.210 (5.33mm)	0.46 (11.68mm)
<b>-7</b>	0.240 (6.09mm)	0.49 (12.44mm)
<b>-8</b>	0.270 (6.85mm)	0.52 (13.20mm)
<b>-9</b>	0.300 (7.62mm)	0.55 (13.97mm)
<b>-10</b>	0.330 (8.38mm)	0.58 (14.73mm)
<b>-11</b>	0.360 (9.14mm)	0.61 (15.49mm)