

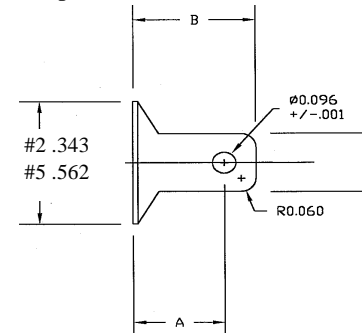
# Skybolt ALoc™ Series Fasteners



ALoc Fasteners are common on Beechcraft airplanes and latches on many cowlings. The design consists of a simple stud with a pin pressed in the shank. The pin must be installed after the stud is installed and removed prior to removing the stud. Some panel applications for #2, #5, and #7 studs may use a wear grommet. Unlike a ZLoc Fastener, this grommet probably does not require replacement when replacing studs. ALoc Fasteners are made in various stud blank lengths and this length is indicated by the 1st Dash#. Each length can have up to 10 2nd Dash#,s, or grip sizes. The 2nd Dash# indicates the maximum grip range in .010 increments. Note that the ALoc design has the least grip range of all 1/4 turn fasteners. Skybolt primarily stocks certain sizes in Stainless Steel for replacement purposes only. Pin Installation Tools are expensive and hard to obtain. To remove an ALoc Stud, clip or die grind the pin enough to remove. Modify a standard pair of Vise Grip Pliers with a die grinder by grinding a slot in one jaw to provide relief when the pin is pressed through the stud.

## ALoc™ Studs

Series	Flush Hd#	Round Hd#	Head Dia	Steel Pin#
1	294426	294422	1/4	294424
2	98264	98293	11/32	99785-2
5	98265	98292	9/16	99836
7	98266	98291	11/16	99799



## Common Stainless Steel Part Numbers

OEM Part#	ALoc Part#	Type	Grip	'A'	Length
98264-2-090SS	SK112060-1-090	#2 Flush	.081-.090	.230	.359
98293-1-060SS	SK98293-1-060SS	#2 Round	.051-.060	.200	.359
98265-1-070SS	SK294186-1-070	#5 Flush	.061-.070	.257	.500
98265-1-080SS	SK294186-1-080	#5 Flush	.071-.080	.267	.500
98265-1-100SS	SK294186-1-100	#5 Flush	.091-.100	.287	.500
98265-2-180SS	SK294186-2-180	#5 Flush	.171-.180	.367	.609
98265-2-190SS	SK294186-2-190	#5 Flush	.181-.190	.377	.609
98265-2-200SS	SK294186-2-200	#5 Flush	.191-.200	.387	.609
98265-2-210SS	SK294186-2-210	#5 Flush	.201-.210	.397	.609
98265-2-230SS	SK294186-2-230	#5 Flush	.220-.230	.417	.609
98265-2-240SS	SK294186-2-240	#5 Flush	.231-.240	.427	.609
98265-2-250SS	SK294186-2-250	#5 Flush	.241-.250	.437	.609
98292-1-080SS	SK294290-1-080	#5 Round	.071-.080	.267	.500
98292-1-090SS	SK294290-1-090	#5 Round	.081-.090	.277	.500
98292-2-170SS	SK294290-2-170	#5 Round	.161-.170	.357	.609
98292-2-250SS	294290-2-250	#5 Round	.241-.250	.437	.609

\*Does not include Pin.

## ALoc™ Grommets

(May not require replacement when replacing studs)

Series	Panel Thickness	Flush Hd#	Curling Tools	Round Hd#	Curling Tools
1	None				
2	Up to .040	295846-1	29693/29695	98013	29693/29694
	.041-.080	295846-2		295902	
5	.040-.121	295250-1	9529/29667	99874-1	9529/29770
	.122-.201	295250-2		99874-2	
7	Up to .040	295900-1	9543/29689	295899-1	29674/29685
	.041-.121	295900-2		295899-2	

## ALoc™ Receptacles

Series	Solid Receptacle		Plain	
	Plain	Csk	Floating Rec	Csk
1	294420-P067	294420-C067		
	294420-P098			
2	99871-P098	98871-C098		99967-C098
5	99833-P098	99833-C098	99947-P098	99947-C098
	99833-P130	99833-C130	99947-P130	99947-C130
7	99797-P098	99797-C098		
	99797-P130	99948-P130	99948-P130	99948-C130